



# PLAINFIELD 143<sup>rd</sup> Street Corridor

Spring 2026

## Help Shape Improvements at 143rd Street & Wallin Drive at US Route 30

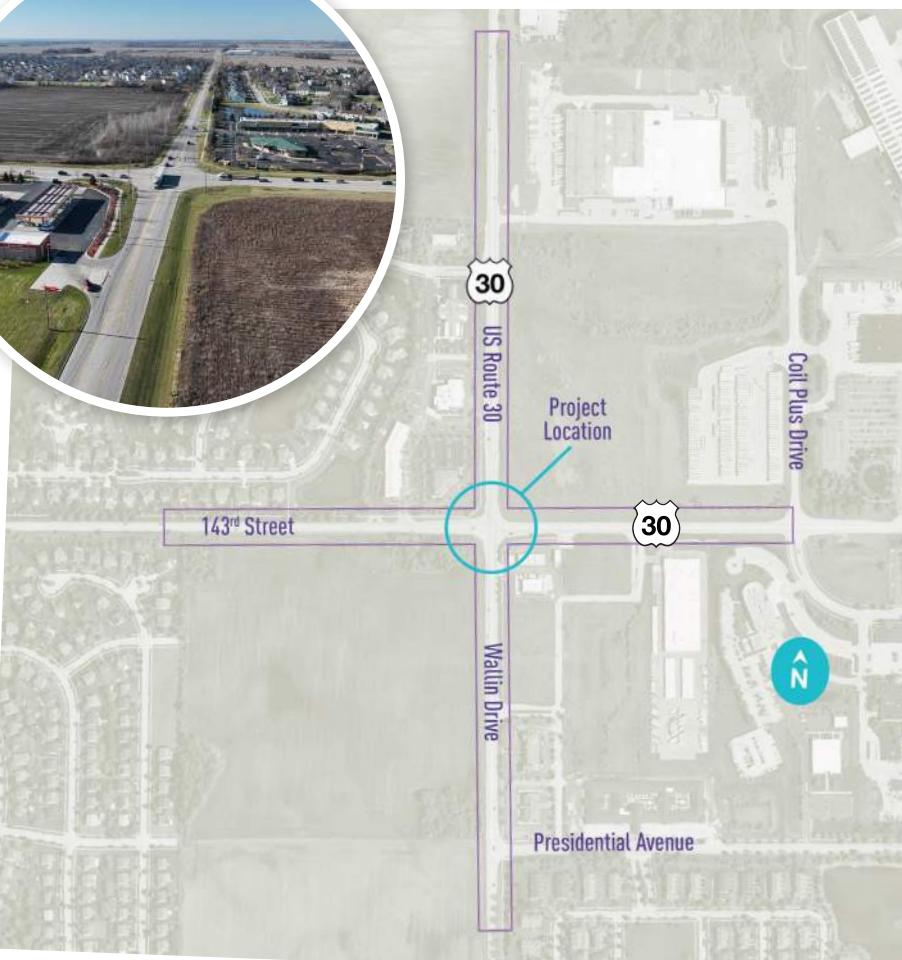
The Village of Plainfield is studying improvements at the intersection of 143rd Street, Wallin Drive, and US Route 30 — a key location along the 143rd Street Corridor.

### What's Being Studied

This project focuses on **improving traffic flow, safety, and access** at this busy intersection. Proposed improvements include:

- >> Intersection widening
- >> Additional turn lanes
- >> Traffic flow and safety upgrades
- >> Multimodal connections

These improvements are part of a larger effort to create a continuous east-west connection across Plainfield and support future growth.



### Project Purpose & Need

- ✔ Improve intersection traffic capacity
- ✔ Safety improvements
- ✔ Pavement reconstruction
- ✔ Increase bicycle and pedestrian options
- ✔ Provide additional connection to Pace Bus Park-n-Ride facility
- ✔ Traffic signal improvements

### Supporting Plainfield's Future

This project supports the Village's vision to reduce congestion in the downtown area, improve mobility across the community, and create opportunities for future growth.

### Why Improvements Are Needed

This intersection experiences:

- ✔ Congestion during peak travel times
- ✔ Safety issues, including rear-end and turning crashes
- ✔ Limited capacity to handle current and future traffic
- ✔ Existing gaps in non-motorized facilities

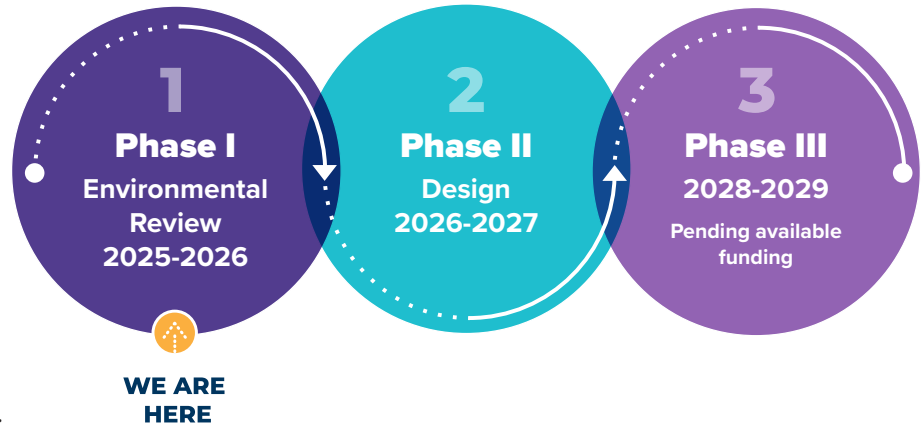
The goal is to create a safer, more efficient intersection that works better for everyone.

## Study Process

The project is currently in **Phase I Engineering**, which includes:

- ✓ Evaluating existing conditions
- ✓ Identifying transportation needs
- ✓ Developing and comparing potential solutions (alternatives)

At the end of this phase, a **detailed engineering report** will recommend a preferred improvement to move forward.



## Funding

The Village is currently funding Phase I Engineering, with future phases expected to include a combination of local, state, and federal funding.

## Project Timeline

### Early/Spring 2025

Develop and evaluate potential intersection design improvements (alternatives)

### Spring 2026

Public Meeting  
Refine proposed design based on feedback and further analysis

### Fall 2026

Submit final engineering report to IDOT for review and approval

We Are Here

PUBLIC INVOLVEMENT

### Summer 2025

Prepare a draft concept for intersection improvements

### Summer 2026

Complete environmental and drainage studies

## Your Input Matters

We want to hear from you!  
View project materials and information at [143corridor.plainfieldil.gov](http://143corridor.plainfieldil.gov).



Comments received by **June 4, 2026** will become part of the meeting record.

## What Happens Next

After the public meeting, the project team will:

- » Review all public input
- » Identify a preferred improvement
- » Submit the recommendation to the Illinois Department of Transportation (IDOT)